



Children's Aid Society in Clearfield County

Our mission is to identify and provide services to improve the lives of children and their families.



2019 Christmas Parade



2019 ANNUAL REPORT

Children's Aid Society in Clearfield County is a private, 501(c) (3) non-profit, non-sectarian agency, that does not discriminate in service provision or employment on the basis of race, color, national origin, age, disability, and where applicable, sex, martial status, familial status, parental status, religion, sexual orientation, genetic information, political beliefs, or on any other basis.

GOLD SPONSOR

Junior Land/Junior Coal Companies

MAJOR CONTRIBUTOR

Tom Grice

SILVER SPONSORSHIP

JJ Powell
PA Grain Processing, LLC
Stoltz Family Dealerships

SFTM STATION SPONSORSHIP

Helmbold & Stewart
Clearfield Burger King

SFTM PAVILION SPONSORSHIPS

PA Simple Cremation
Travis Gheen Construction, LLC

SFTM TEAMS

Naddeo & Lewis
R&R Radiology Consultants, LLC
Stoltz Family Dealerships
CNB Bank
Hrenko Insurance Agency
Houtzdale Moose Lodge #327 (2 teams)
JJ Powell
Junior Land/Junior Coal
CBT Bank
Pennsylvania Grain Processing
Grice Gun Shop
KMI Trucking



SFTM NON-MONETARY DONATION

Sheetz
Jack's Distributing
Budget Beverage
Shop-n-Save
John Peck
Adam Uncapher
Bee Kind Winery
Cuetara-Hile Memorial Center
David Glass
Genna Distributing
Giovanni's
Hrenko Insurance Agency
Knotty Ray Carvings
Knepp Fencing
Lisa Soult
Lowe's Clearfield
Martin's DuBois
Roaring Spring Water
Square One Design Print
Pittsburgh Steelers
Swisher Concrete
TD Fabricating and Welding Enterprise
TH Port-a-John
Grice Gun Shop
Zalno's Jewelers

CORPORATE SPONSOR

Stoltz Family Dealerships

T-SHIRT SPONSORSHIP

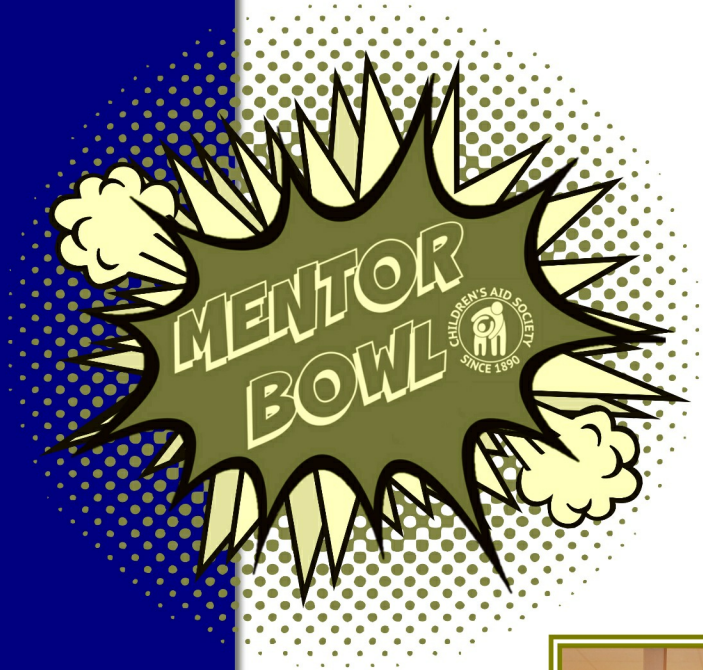
Boyles Insurance
Catherman Dental
CBT Bank
Hair Magic by Julie

TEAMS

Lynda Saggese-Team Saggese
Team Woodel—Christina Woodel
Team Soutl—Lisa Soutl
Erin Catherman-Catherman Dental
CBT Bank—Laurie Hunt
CBT Bank—Shay Flannagan
Boyles Insurance—Kip Chmelar
Hair Magic By Julie—Julie Irwin
Clearfield Metal Technologies-A-Chris Britton
Clearfield Metal Technologies-B-Brandon Sass
Team English—Dwight English
Team Kelly—Shannon Kelly
CNB Bank—Samantha Lippert
Special Olympics-Connie Hoyt
Bowling DCs—Ruth Lytle
Team Clearfield County CYFS—Wanda McLaughlin
Team Richtscheit—Stefanie Richtscheit
Team Floro—Bonnie Floro

DONATIONS

Bombshell Salon
Bucks Pizza
Chubby’s One Hour Quality Cleaners
CNB Bank
Dairy Queen
Domino’s Pizza
Encore Salon
Great Clips
JG Food Warehouse
Jim’s Sports Center
Lefort’s Sweet Shoppe
Ritz Theatre
Save-A-Lot
Scotto’s Pizza
Sid’s Super Submarines
St. Charles Café
The Painting Broad
Jimmy’s Corner
Walmart Distribution Center



BOARD OF DIRECTORS (ENDING 2019)

Lisa Soutl - *President*
Donna Lykens - *Vice President*
Gigi L. Gearhart - *Secretary*
Mary Ann Conaway - *Treasurer*
Joyce Falger - *Assistant Treasure*
Barbara Beish
Adrianne Sipes
Barb Fawns
Amy Finn
Ruth Lytle
Carol Romanski
Ann Wood
Judith Zapsky
Rebecca Dotts
Eric White
Stephanie Matia
Julie Daquilante

MANAGEMENT STAFF

Bonnie Floro
Executive Director
Teresa Guaglianone
Assistant Director
James Mattern
Fiscal Manager
Shannon Kelly
Adoption Manager
Krista Elensky
Foster Care Manager
Dan Kennard
Mentoring Coordinator
Tara Lansberry
Child Care Director
Danielle Boyles
Real Relationships Manager
Christina Woodel
Family Support Manager



Children’s Aid Society
1008 S. 2nd Street, Clearfield, PA
814-765-2686

- Adoption & Foster Care
- Child Care & Early Learning
- Youth Mentoring
- Family Support Services

www.ChildAid.org



ABOUT US

Children’s Aid Society was organized in 1890 to find families for orphaned and abandoned children. In 1918 the agency began operating a “Children’s Home” at our current location in Clearfield. When the home closed in the 1980s due to changes in state and federal regulations, we continued to serve families and children through our four major service areas. In 2019 we celebrated 129 years of serving children and families throughout Central Pennsylvania.

We continued to expand our programming to meet the needs of our community with the addition of the Parents as Teachers program.



WE SERVED 1,876 CHILDREN AND ADULTS THROUGH FOUR MAJOR SERVICE AREAS

- ❖ **Adoption & Foster Care Services** which include private and Statewide Adoption & Permanency Network (SWAN) adoption services, international home studies, and foster care.
- ❖ **Child Care & Early Learning Services** which include our three-story Child Care Center, after school care at Clearfield Elementary, and two Pennsylvania Pre-K Counts classrooms.
- ❖ **Family Support Services** including the Real Relationships project, In-Home Services, Nurturing Parenting, Parents as Teachers (PAT), Relatives as Parents Program (RAPP), Supervised Visitation and the Triple P – Positive Parenting Program.
- ❖ **Youth Mentoring**, matching youth in need with positive role models.

OUTSTANDING DONORS

Bradley and Lynnanne Baumgardner
CBT Bank

CLEARFIELD COUNTY CHARITABLE FOUNDATION ANNUAL DONOR FUNDS

Kurtz Community Fund
Ann H. Soult Memorial Fund

EXCEPTIONAL DONORS

Clearfield Area High School
Nancy Connors
DuBois Rotary Club
William & Joyce Falger
Tom & Brenda Grice
Mark & Carol Harley
Jeb & Lisa Soult
SCI Houtzdale
Moose Lodge #97-Clearfield
Marcus & Mack
Leslie Bodle (in memory of Diane Bodle)
Betsy Long
Mosquito Creek Sportsmen’s Association
Ursula Pinto
Polish Citizens Club

GENEROUS DONORS

Curwensville Area Lutheran Ministry
Glen Richey Sportsmen’s Association
Dana Beauseigneur
GIO’s
Joan Shimmel
Burger King Clearfield
Cynthia Heins
Clearfield Eagles #812
RJ Corman Railroad Group, LLC
Donald Franson
Carol & Carl Peterson
Duane & Terry Dotts
A-1 Janitorial
By The Numbers
Cress-Wood Co.
Ann & Michael Dotsey
Tom & Becky Dotts
Grassflat Moose # 941
Kenneth & Amy Lezzer
VFW Post 5020 Osceola Mills
VFW Post 6321 Smithmill
VFW Post 7043 Coalport



OTHER KIND DONORS

Grace Lutheran Church
Michael & Marianne McCloskey
Dr. George Mosch
Edward & Kathy Proud
Pat Errigo
Karen Ferraraccio
American Legion Auxiliary Unit 62
Curwensville Lions Club
Stan & Julie LaFuria
Shirley London
Women of the Moose Chapter #2259
Peter J. Marino

NON-MONETARY CONTRIBUTIONS

Walmart Distribution Center #6027
By The Numbers
WOKW-Raymark Broadcasting

FUNDRAISERS

2019 FUNDRAISING (NET AMOUNT)

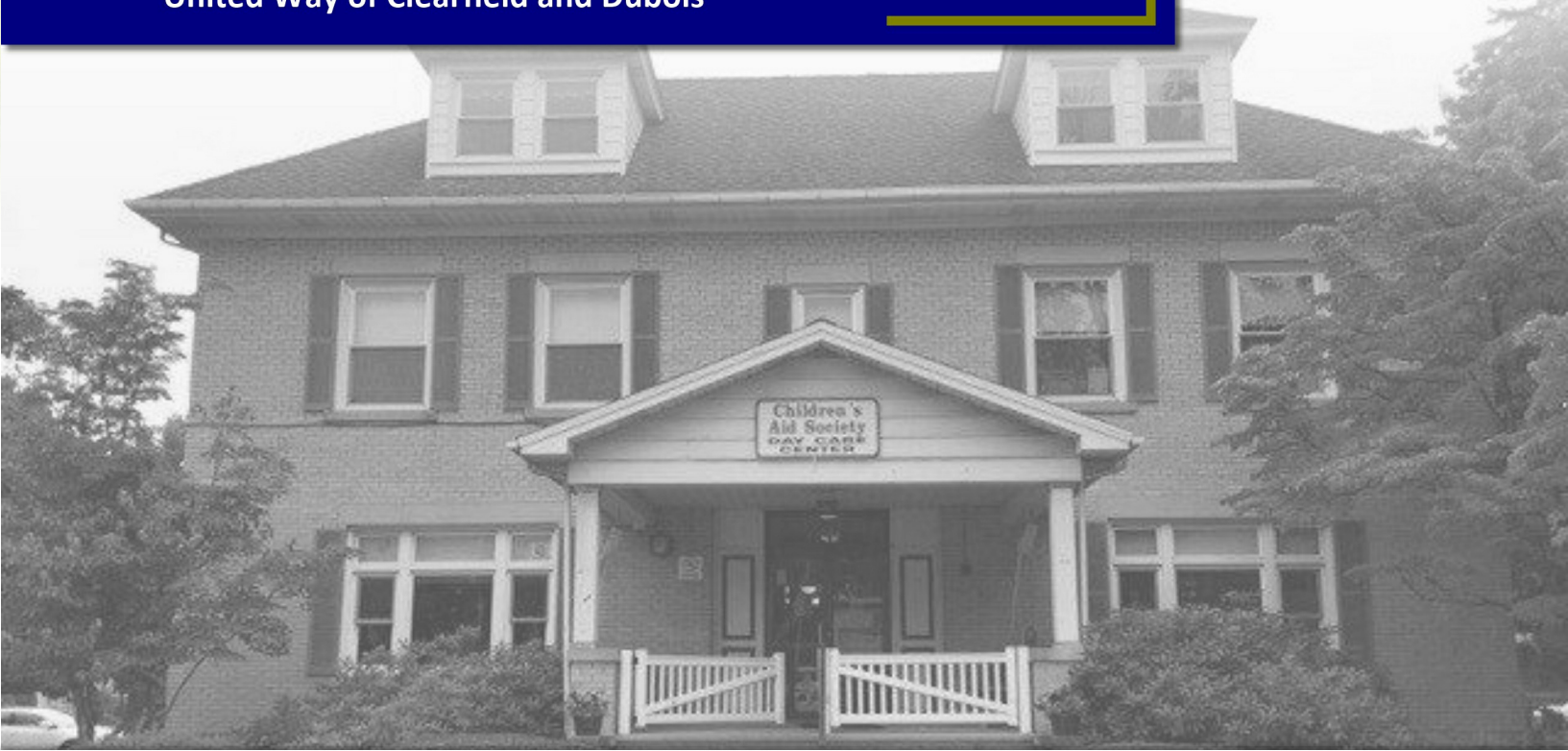


2019 UNITED WAY FUNDING



MEMBERSHIPS

- Centre County Council for Human Services
- Centre County Communities That Care
- Clearfield, DuBois and Punxsutawney Chambers of Commerce
- Clearfield County Local Interagency Coordinating Council (LICC)
- Clearfield County Collaboration and Prevention Board
- Clearfield Co. Children, Youth & Family Services Advisory Board
- Clearfield Ministerium
- Clinton County Collaboration Board
- Early Care and Education Consortium
- Elk County Family Resource Network
- Jefferson County Collaboration & Prevention Board
- Jefferson Co. Children and Youth Advisory Board
- Moshannon Valley Economic Development Partnership
- National Council for Adoption
- North American Council on Adoptable Children
- Nonprofit Networking Committee
- Pennsylvania State Resource Family Association
- Pennsylvania Association of Child Care Agencies
- Pennsylvania Council of Children, Youth and Family Services
- PA Family Support Alliance
- Pennsylvania Association of Nonprofit Agencies
- Providers Resource Network
- United Way of Clearfield and Dubois



OUR SERVICES

ADOPTION

Children’s Aid Society’s **Adoption** program operates as a full-service adoption agency, providing services to individuals and families in all stages of the adoption process throughout central Pennsylvania. We are an affiliate of the Statewide Adoption and Permanency Network (SWAN) and Hague Accredited. Hague Accreditation allows us to assist future adoptive families in adopting children from countries party to the Hague Convention. This year we completed 201 individual services with children and families.

“Amazed, impressed and grateful that all of you do so much work to help children”
— quote from a foster care family

FOSTER CARE

Our **Foster Care** program provides nurturing, supportive foster families for children who need temporary care until they are re-united with their biological families or become available for adoption. We identify and recruit potential foster families, assist families through the approval process, facilitate and supervise placements, provide ongoing training, and work with county children and youth agencies to ensure the children and families are receiving the services they need. Our services touched the lives of 158 people this year.



100% of Foster Families said that they would recommend our services to others!

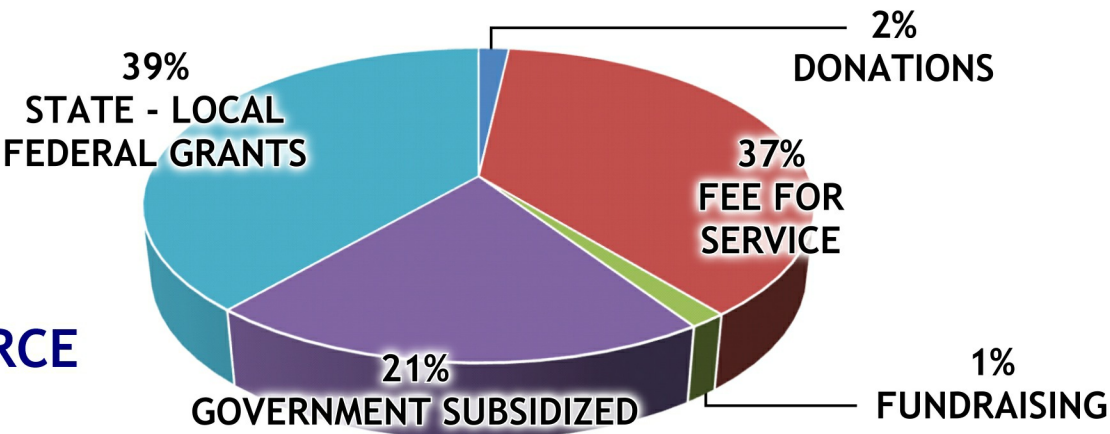
FUNDING

Our agency has a wide variety of funding sources including federal, state and local grants, donations, private fees, etc. In 2019, we were members of the Clearfield Area United Way and DuBois Area United Way. Money from the United Ways directly helps sustain our programs and is often used as a required local match. We appreciate their support!

2019 GRANTS, FEES AND ALLOCATIONS

	AMOUNT
Real Relationships Grant Dept. of HHS, Administration of Children & Families	\$577,462
Foster Care Fees from Counties	\$486,687
Child Care Private Pay and Subsidized Fees	\$401,384
Statewide Adoption & Permanency Network and Private Adoption Fees	\$373,890
PA Office of Child Development and Early Learning Grant – Pre-K Counts	\$189,800
Parenting & In-Home Services County and Private Fees	\$113,556
PA Commission on Crime & Delinquency Grant, Triple P Positive Parenting Program, Jefferson	\$62,919
PA Dept. of Education Child and Adult Care Food Program	\$34,366
PA Children’s Trust Fund Grant, Triple P Positive Parenting Program	\$34,250
PA Children’s Trust Fund Grant, Parents as Teachers Program	\$25,000
PA Commission on Crime & Delinquency Grant, Triple P Positive Parenting Program, Centre	\$13,616
Kurtz Community Fund – Clearfield County Charitable Foundation Annual Distribution	\$11,774
Keystone STARS – Child Care Program Award	\$11,290
CBT Bank, Educational Improvement Tax Credit Program	\$10,000
Walmart Foundation	\$10,000
Mengle Foundation	\$7,000
Ann H. Soult Memorial Fund – Clearfield County Community Foundation Annual Distribution	\$6,028
Lightner Trust Fund	\$5,250
Rite Aid Foundation	\$5,000
Diakon SWAN Mini Grant	\$2,375
Clearfield County Charitable Foundation	\$1,000

2019 INCOME BY SOURCE



OUR SERVICES

IN HOME SERVICES

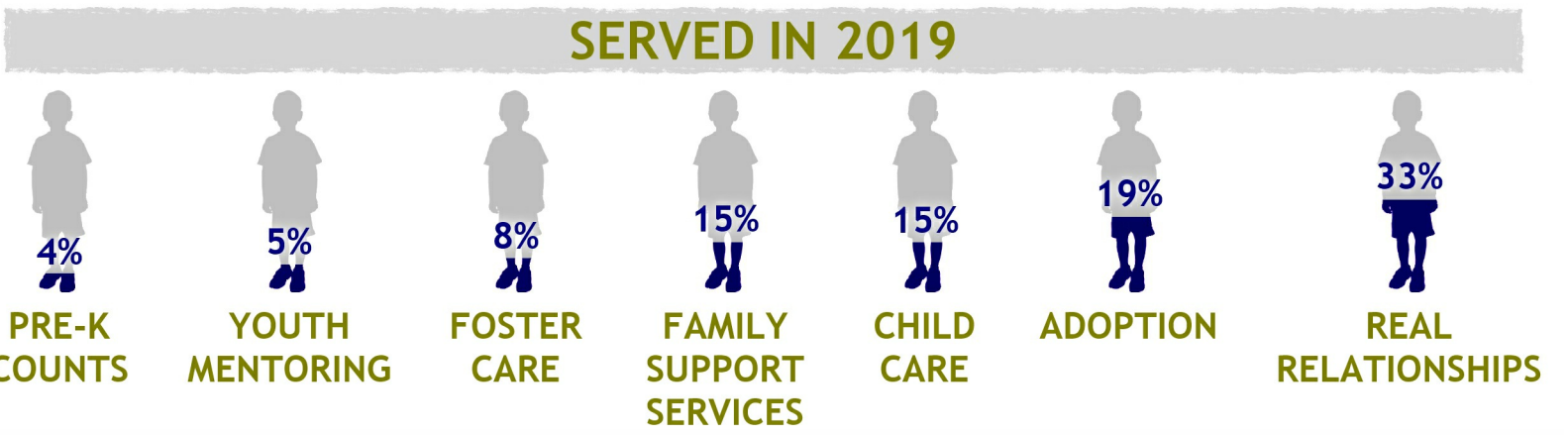
In-Home Services provides intensive, supportive services to families referred by Clearfield County Children, Youth & Family Services. These strengths-based interventions address challenges, link families to community services, stabilize families and enhance family functioning in order to help families remain intact or reunify. We also provide supervised visitation for court-ordered and private pay clients.

POSITIVE PARENTING PROGRAM

Funded through Clearfield County, two-year violence prevention grants from the Pennsylvania Commission on Crime and Delinquency awarded in 2017 and 2019, and a three-year PA Children’s Trust Fund grant, the evidence-based **Triple P–Positive Parenting Program** builds positive relationships, teaches discipline strategies, offers parenting support and fosters healthy childhood development. This program is carried out in the community through weekly home visits or an eight session group series. Triple P served 126 people in Clearfield, Jefferson, and Centre Counties in 2019.

PARENTS AS TEACHERS

Parents as Teachers (PAT) was implemented in 2019 with the help of a three-year PA Children’s Trust Fund grant. This program helps families of children ages 0-3 realizes that they are their child’s first educator. This service is provided to families Clearfield and Jefferson Counties through continuing home visits and group connections for a period of at least two years.

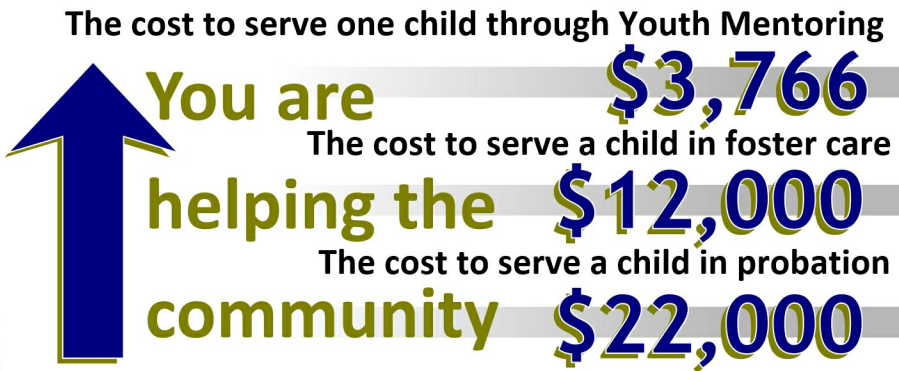


OUR SERVICES

YOUTH MENTORING

Youth Mentoring provides children in need with professionally supported mentoring relationships that change their lives for the better. In our Community-Based program, adult volunteers are matched with youth to provide friendship, support and fun activities. In School-Based Mentoring, high school volunteers are matched with elementary students in a weekly after-school program. No fees are charged for the program and most of our agency fundraising efforts directly benefit mentoring services. We served 31 matches through mentoring this year.

- MENTORING FACTS**
- ✓ Community program matching a child with caring adult
 - ✓ School-based program at Wasson Elementary in DuBois
 - ✓ Mentors provide friendship, support, and encouragement
 - ✓ Fun outings are offered every other month
 - ✓ It’s FREE
 - ✓ Funded through business and individual donations / fundraising



98% of those surveyed were satisfied or very satisfied with services.

OUR SERVICES

CHILD CARE

In our PA licensed **Child Care Center**, highly qualified staff provide loving care for children beginning at 6 weeks of age. **This year we reached our goal of obtaining a Star 4 rating (the highest level) in the Keystone Stars state quality initiative.** Separate rooms and daily curriculum are provided for infants, toddlers, preschoolers and children through 6th grade. Our after school program at **Clearfield Elementary** allows school-age children to balance learning and fun through a variety of experiences. From homework help to fun physical activities, our program is designed so that children remain safe until their parents’ pick them up. **Summer School Age Care** gives children an active, social and fun summer by offering a variety of daily activities. Our child care clients average 83% private pay and 17% subsidized care.

KEYSTONE

- Standards
- Training/Professional Development
- Assistance
- Resources
- Supports



PRE-K COUNTS

We participate in the statewide initiative **Pennsylvania Pre-K Counts**. In our classrooms, children receive the benefits of full-day preschool free-of-charge 180 days each year. Certified Early Childhood Education teachers lead each classroom. Each year, we receive excellent scores on the Early Childhood Environmental Rating Scale and state-monitored program reviews. This year we received an expansion grant to add an additional classroom and one more teacher – expanding our program from 18 to 28 students!

Over 98% of child care children are meeting or exceeding literacy expectations - 2019

OUR SERVICES

REAL RELATIONSHIPS

Real Relationships, funded by a federal grant from the Office of Family Assistance, is currently in the fifth year of the five year grant. The Real Relationships project provides classes and workshops to teens, individuals, non-married couples and married couples. The goal of the project is to provide people with the tools to have happy, healthy relationships through fun and interactive programs held in Clearfield County and the eight surrounding counties. By the end of September 2020 the Real Relationships project aims to have provided 2,105 individuals with relationship education in high schools, weekly classes in Clearfield and Centre Counties, weekend retreats and one day workshops. This program helped 615 people improve their relationship skills in 2019.

NURTURING PARENTING

The **Nurturing Parenting** program emphasizes the importance of positive family relationships. The entire family, not just the parents, learn the skills needed to build a happier, healthier family life. Weekly sessions are held over 16 weeks and include classes for both parents and children. Also included are fun and interactive activities, quality family time, child care and refreshments. This program served 16 people in 2019. Nurturing may also be provided in the home as needed.

RELATIVES AS PARENTS PROGRAM

The **Relatives as Parents Program (RAPP)** assists grandparents and other relatives who have taken on the role of primary caregiver for related children. The support group meets once each month in Clearfield and in Coalport. Foster and adoptive parents are also invited to participate. Together, caregivers can share their struggles and successes and gather information about community resources. The program served 19 people in 2019.